

# *Limnodynastes tasmaniensis*

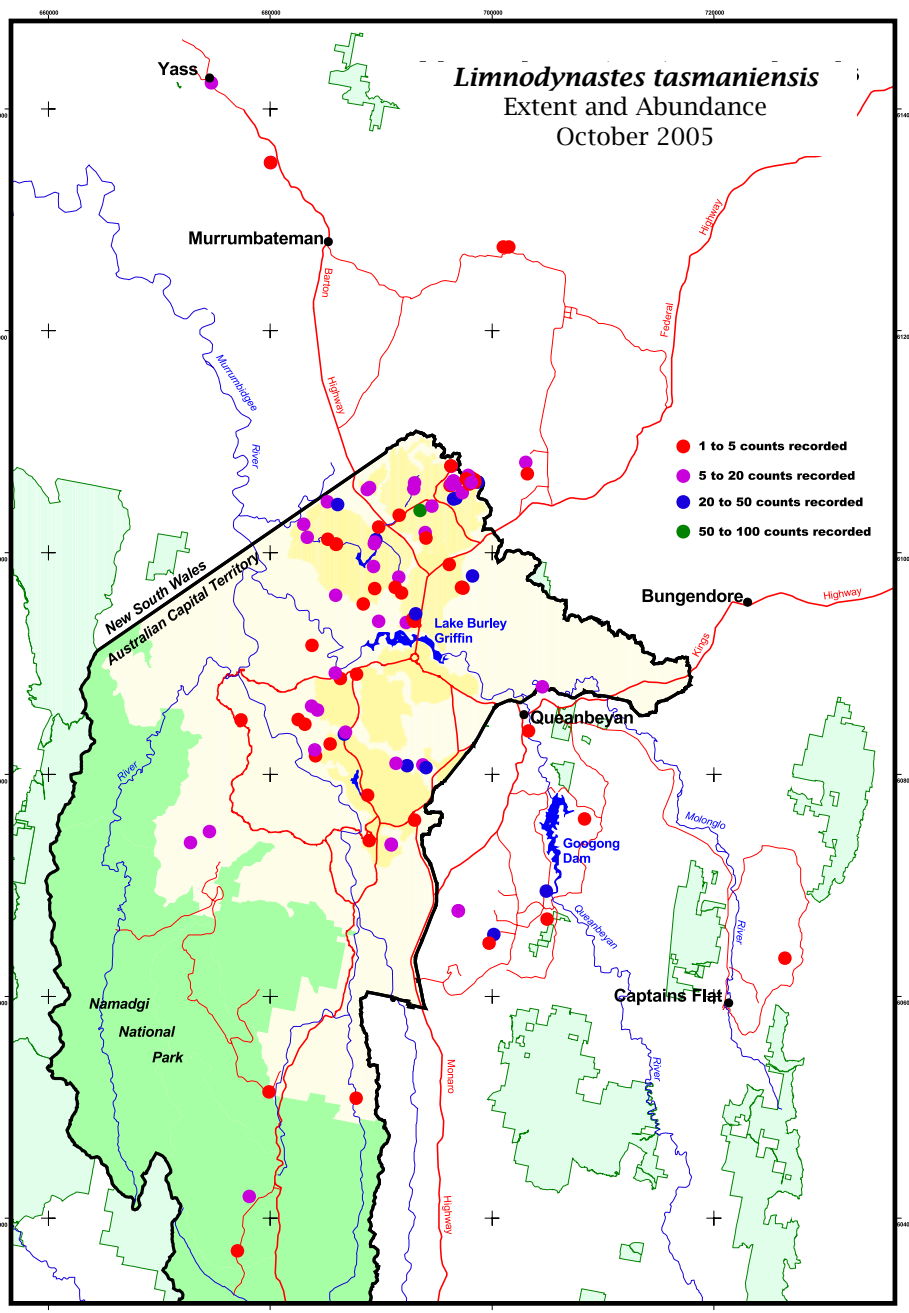
## Spotted Grass Frog



Photo: www.frogs.org.au

Site Code	Estimated maximum abundance	Site Code	Estimated maximum abundance
AMA100	5 to 20	GOG004	1 to 5
ANU019	5 to 20	<i>GUN300</i>	<i>50 to 100</i>
ANU021	1 to 5	HAL001	5 to 20
ANU022	1 to 5	HAL002	5 to 20
BIL100	1 to 5	<i>ICH001</i>	<i>1 to 5</i>
<i>BLA100</i>	<i>1 to 5</i>	JER100	5 to 20
BRA100	1 to 5	JER110	5 to 20
BRU100	5 to 20	<i>MCQ100</i>	<i>1 to 5</i>
CEQ100	1 to 5	MCQ150	5 to 20
CEQ200	1 to 5	MCW001	5 to 20
CFR200	1 to 5	MCW002	20 to 50
<i>CGH050</i>	<i>1 to 5</i>	MCW010	5 to 20
CHC200	1 to 5	MFL001	1 to 5
CMC100	5 to 20	MFL002	1 to 5
CMC600	1 to 5	MFL003	5 to 20
CMC700	20 to 50	MFL004	5 to 20
CMC750	5 to 20	MFL005	5 to 20
CMM200	1 to 5	MFL006	5 to 20
CMW500	1 to 5	<i>MFL007</i>	<i>5 to 20</i>
<i>COK100</i>	<i>1 to 5</i>	MFL008	5 to 20
CON100	5 to 20	<i>MFL009</i>	<i>1 to 5</i>
CON110	5 to 20	MFL011	20 to 50
<i>COO100</i>	<i>5 to 20</i>	MFL012	20 to 50
CRA300	5 to 20	MFL013	5 to 20
CTP450	1 to 5	MFL014	20 to 50
<i>CTT300</i>	<i>1 to 5</i>	MFL015	1 to 5
DGP001	5 to 20	MFL016	1 to 5
FAD100	20 to 50	MFL017	1 to 5
FAD300	5 to 20	MFL018	5 to 20
FBM100	5 to 20	MFL019	1 to 5
FGC009	5 to 20	MFL020	1 to 5
FGC050	5 to 20	MFL021	5 to 20
FGC090	5 to 20	MIR100	5 to 20
FGD030	1 to 5	MIT100	1 to 5
FGW100	1 to 5	MIT200	5 to 20
FLO200	1 to 5	MOL150	5 to 20
FMC120	1 to 5	MUR100	1 to 5
FMC140	1 to 5	MUR200	1 to 5
FMC160	1 to 5	<i>NAA100</i>	<i>1 to 5</i>
FMC220	20 to 50	PIN100	5 to 20
FMW010	20 to 50	<i>PLM100</i>	<i>5 to 20</i>
FMW020	1 to 5	<i>PLM200</i>	<i>1 to 5</i>
FRA200	20 to 50	QBN200	1 to 5
<i>FTB010</i>	<i>5 to 20</i>	RCD001	5 to 20
FTD010	5 to 20	RCD002	20 to 50
FTD160	5 to 20	<i>SFF100</i>	<i>5 to 20</i>
FTP100	1 to 5	<i>STW003</i>	<i>1 to 5</i>
<i>FTR010</i>	<i>1 to 5</i>	<i>SUT100</i>	<i>5 to 20</i>
GFW002	1 to 5	<i>SUT101</i>	<i>1 to 5</i>
GOG001	20 to 50	UCP100	1 to 5
GOG002	1 to 5	YAS100	5 to 20
GOG003	20 to 50		

Census Year	2002	2003	2004	2005
Number of sites where detected:	9	64	91	102
Percentage of total sites surveyed, where detected:	31%	53%	67%	71%
Median number of individuals observed:	1 to 5	1 to 5	1 to 5	1 to 5



Results in italics indicate observations taken outside of designated monitoring times.